



ARIN Update

Aaron Hughes
ARIN Board of Trustees

2013 Focus

- **IPv4 Depletion & IPv6 Uptake**
 - Developing, adapting, and enhancing processes and procedures
 - IPv4 Count Down Plan
 - Continuing IPv6 outreach
 - IPv4 Transfers
- **Continued development and integration of web-based system (ARIN Online)**
- **Continuing migration from legacy systems by deploying new functionality**
- **RPKI deployment**
- **Continued participation in Internet Governance forums**

Current IPv4 Inventory



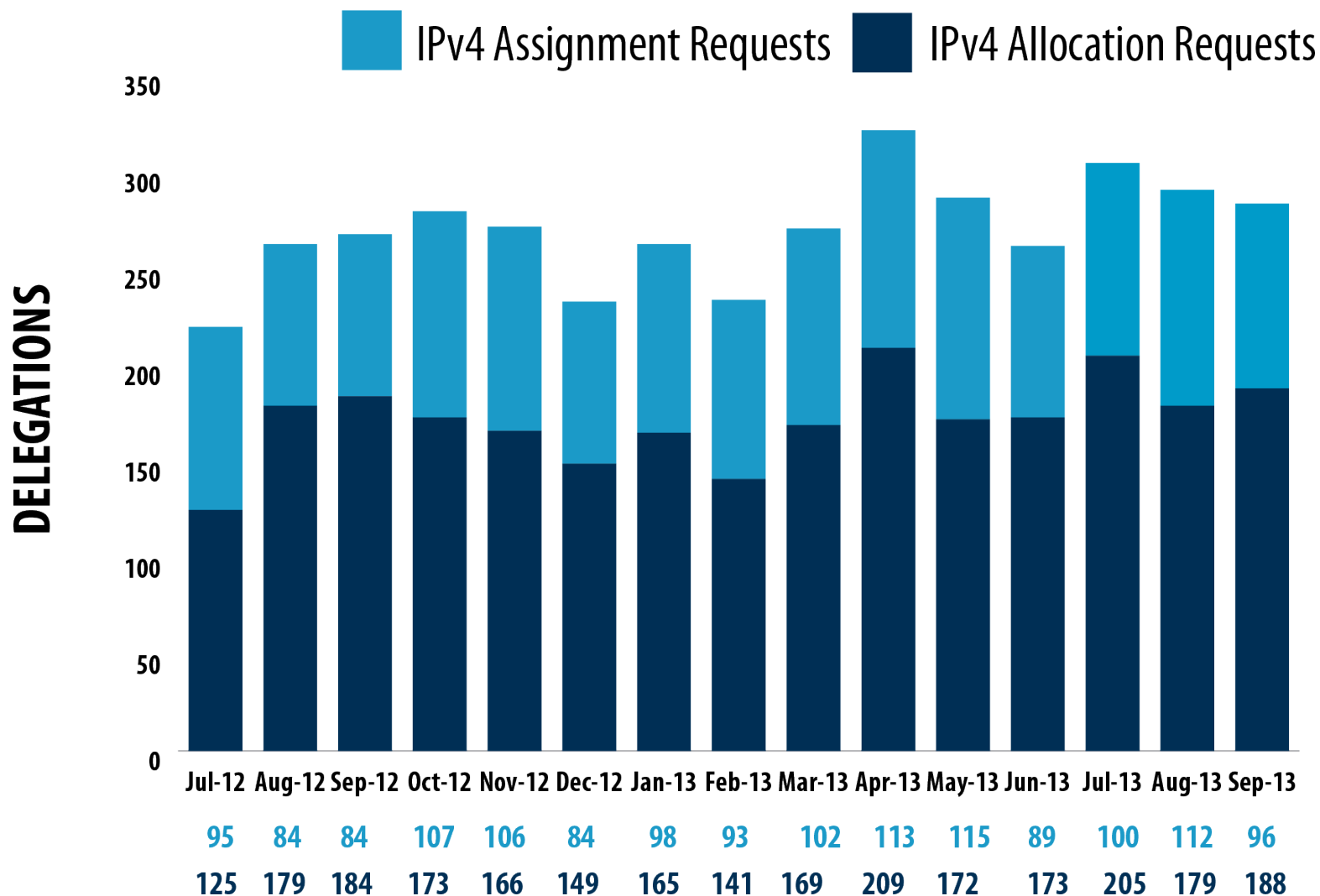
1.74 /8 equivalents
in the pool of
“available addresses”

~4 /16 equivalents in the “RRH” bucket
(RRH = returned, revoked, held)

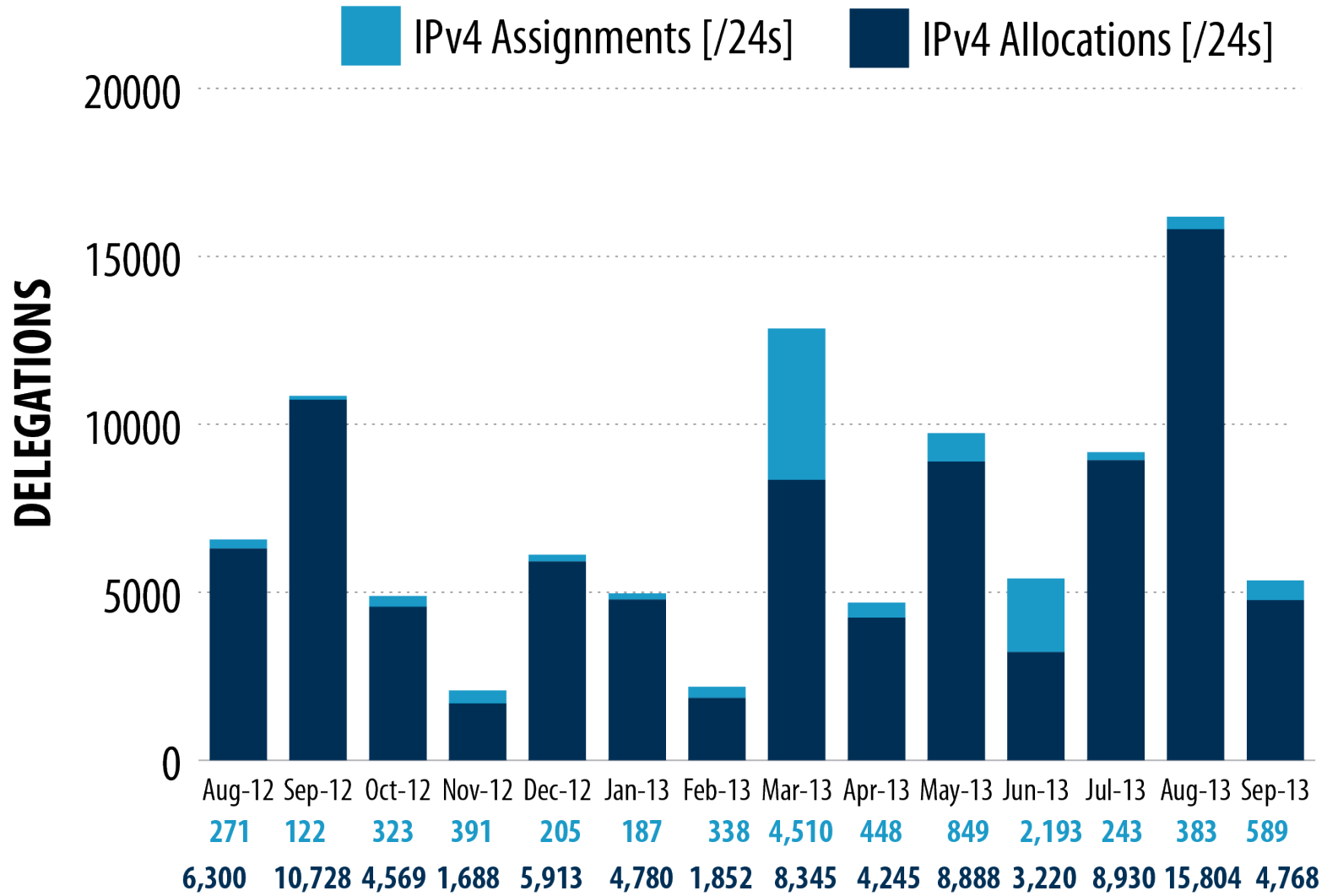
1 /10 reserved

- For NRPM 4.10 “Dedicated IPv4 block to facilitate IPv6 Deployment”

Requests for IPv4 Address Space (past 12 months)

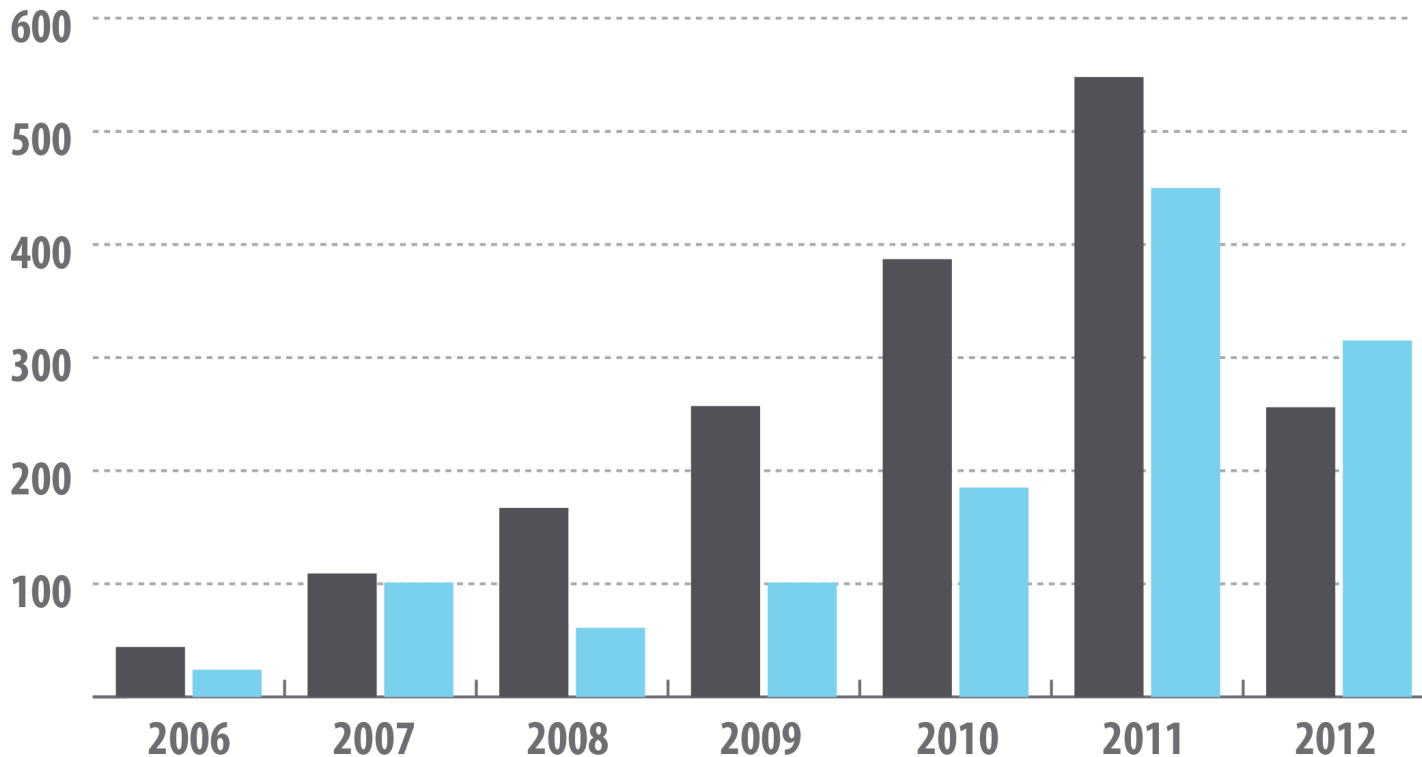


IPv4 Space Issued (past 12 months)

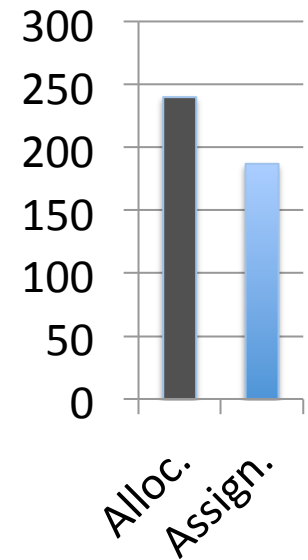


IPv6 Space Issued

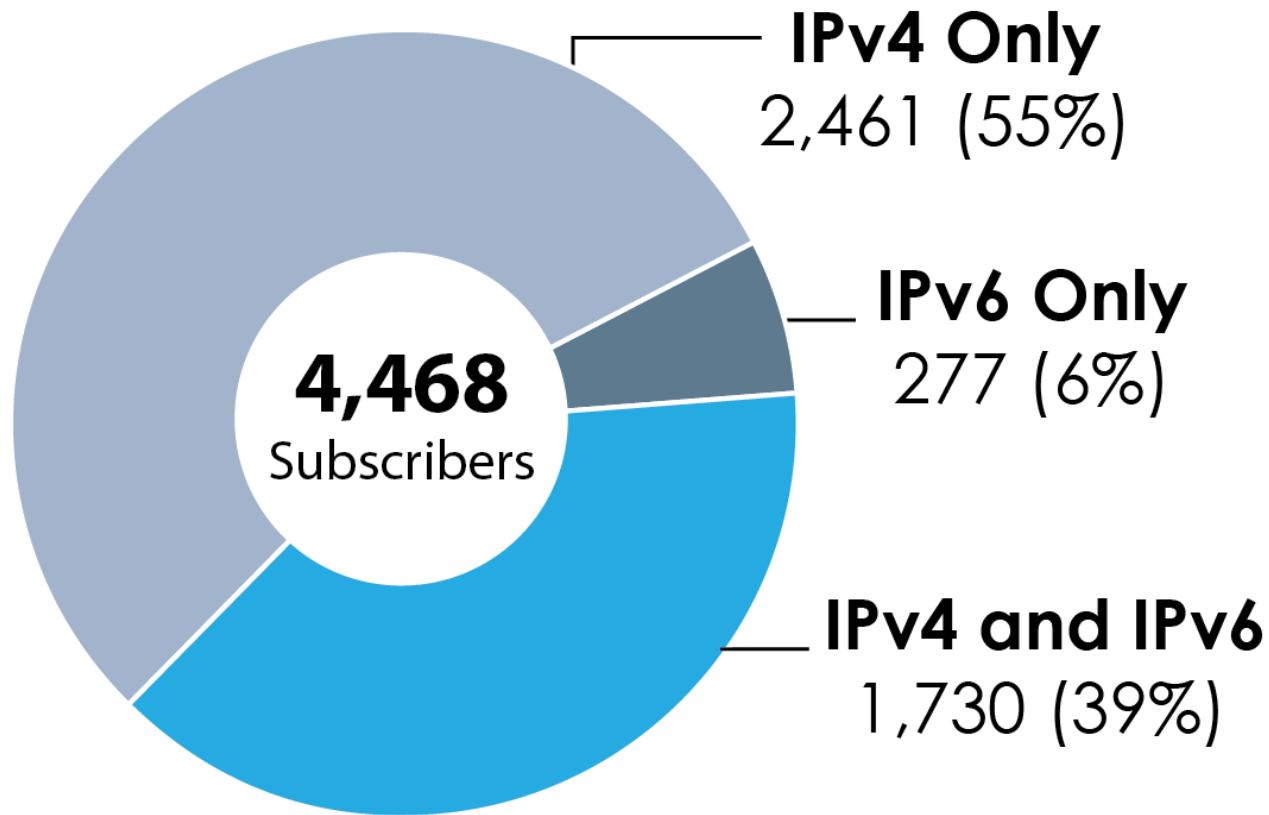
■ IPv6 Initial Allocations
■ Total IPv6 Assignments Issued



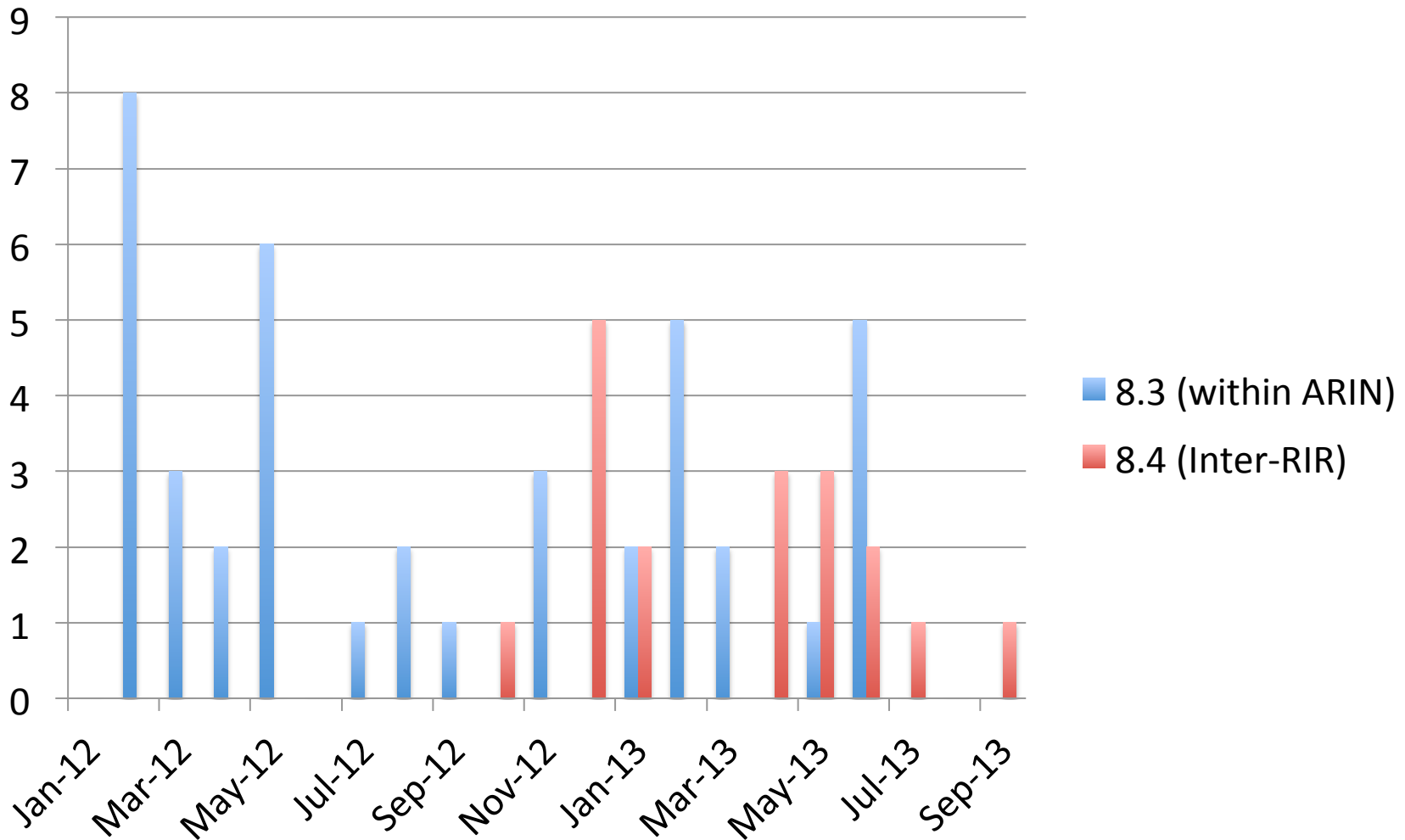
**2013 thru
August**



IPv4 vs IPv6 Subscribers



8.3 (Specified) & 8.4 (Inter-RIR) Transfers



***18 networks transferred from ARIN to APNIC region to date**
<https://www.arin.net/knowledge/statistics/transfers.html>

Policy Proposals

- ARIN-2013-4: RIR Principles
- ARIN-2013-6: Allocation of IPv4 and IPv6 Address Space to Out-of-region Requestors
- ARIN-2013-7: Merge IPv4 ISP and End-User Requirements

<https://www.arin.net/policy/proposals/>

Public Facing Development Efforts

- **Accomplishments**

- Hosted RPKI since Sep 2012
 - 15 Orgs as of 2/11/13
 - 41 ROA's as of 2/11/13
 - 61 Relying Parties
- Web-based Delegated RPKI as of 2/16/2013
- Integrated Payments
- Extended Statistics Reports now consistent with other RIR's
- Fee Calculator
- Automated Invoicing

- **Upcoming Near-term Work**

- Up/Down RPKI Interface – Deployed 7 Sep 2013
- Oracle to Postgres Conversion – Underway
- Automating Transfers

Upcoming ARIN Meetings



NANOG 60
Atlanta, Georgia
10-12 Feb. 2014



CHICAGO, ILLINOIS | 13-16 APRIL 2014

